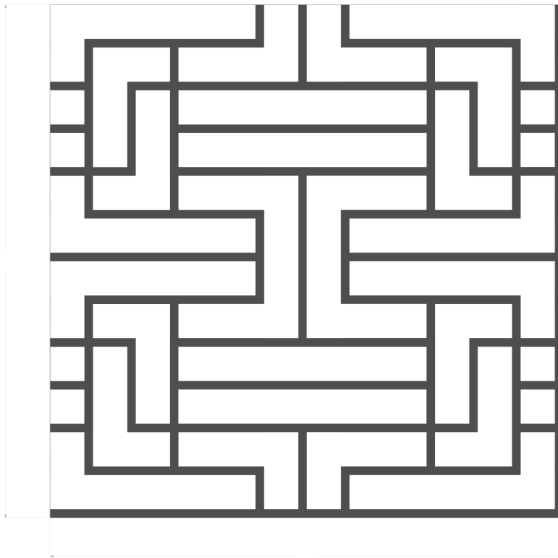


Tile Front



23.6"  
600mm

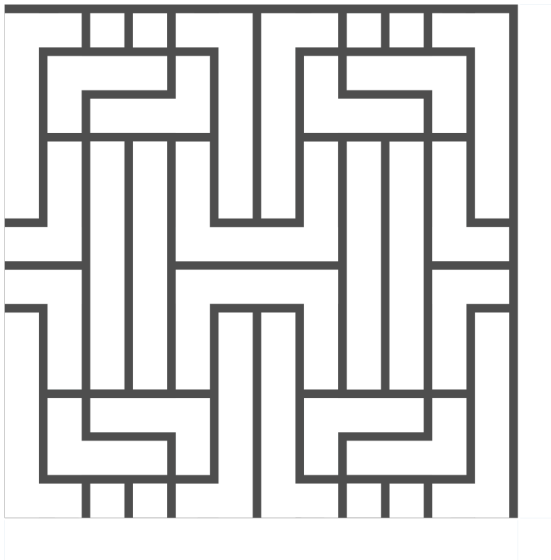
23.6" 600mm

Tile Side



0.49" 12.32mm

Tile Front



23.6"  
600mm

23.6" 600mm

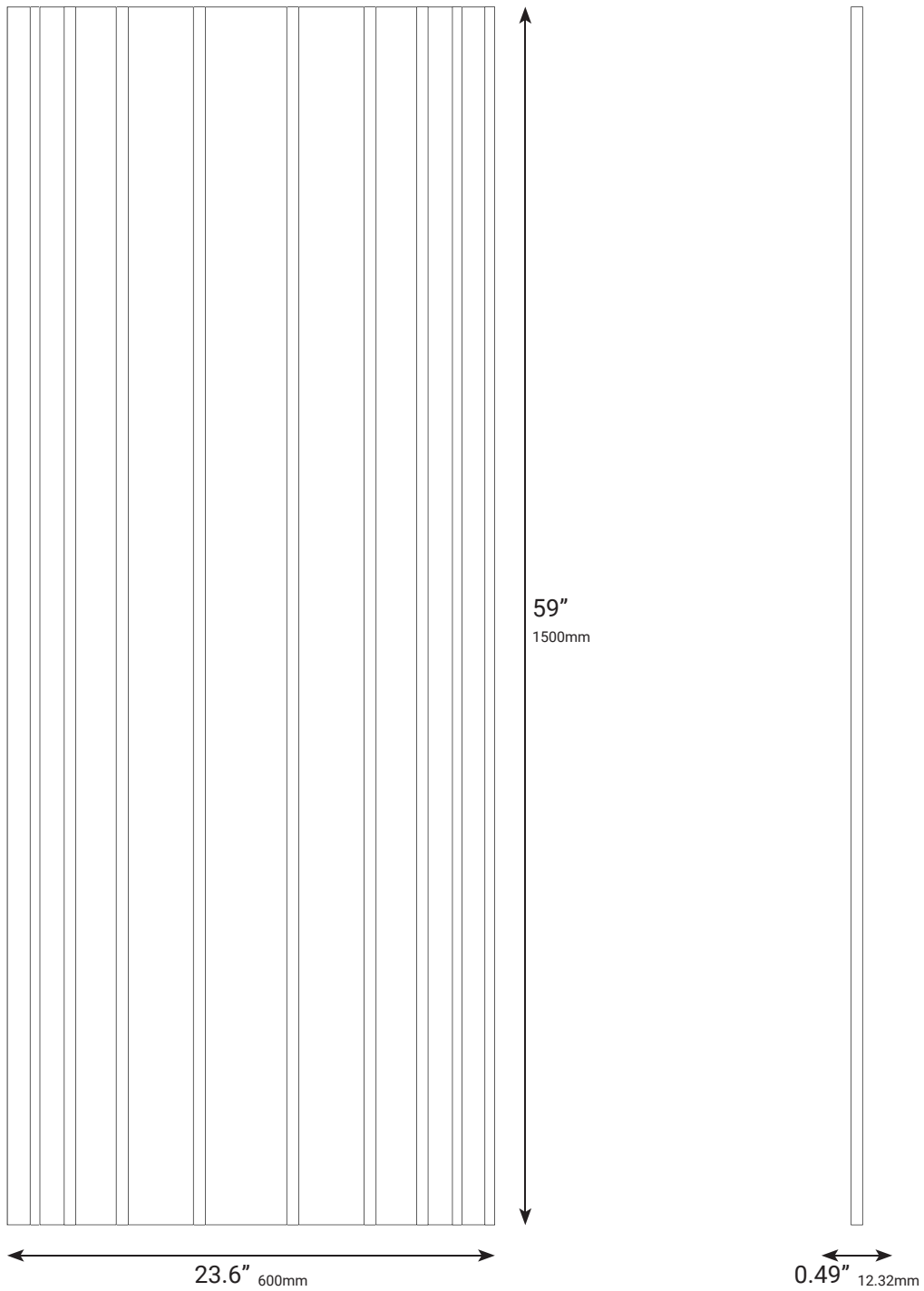
Tile Side



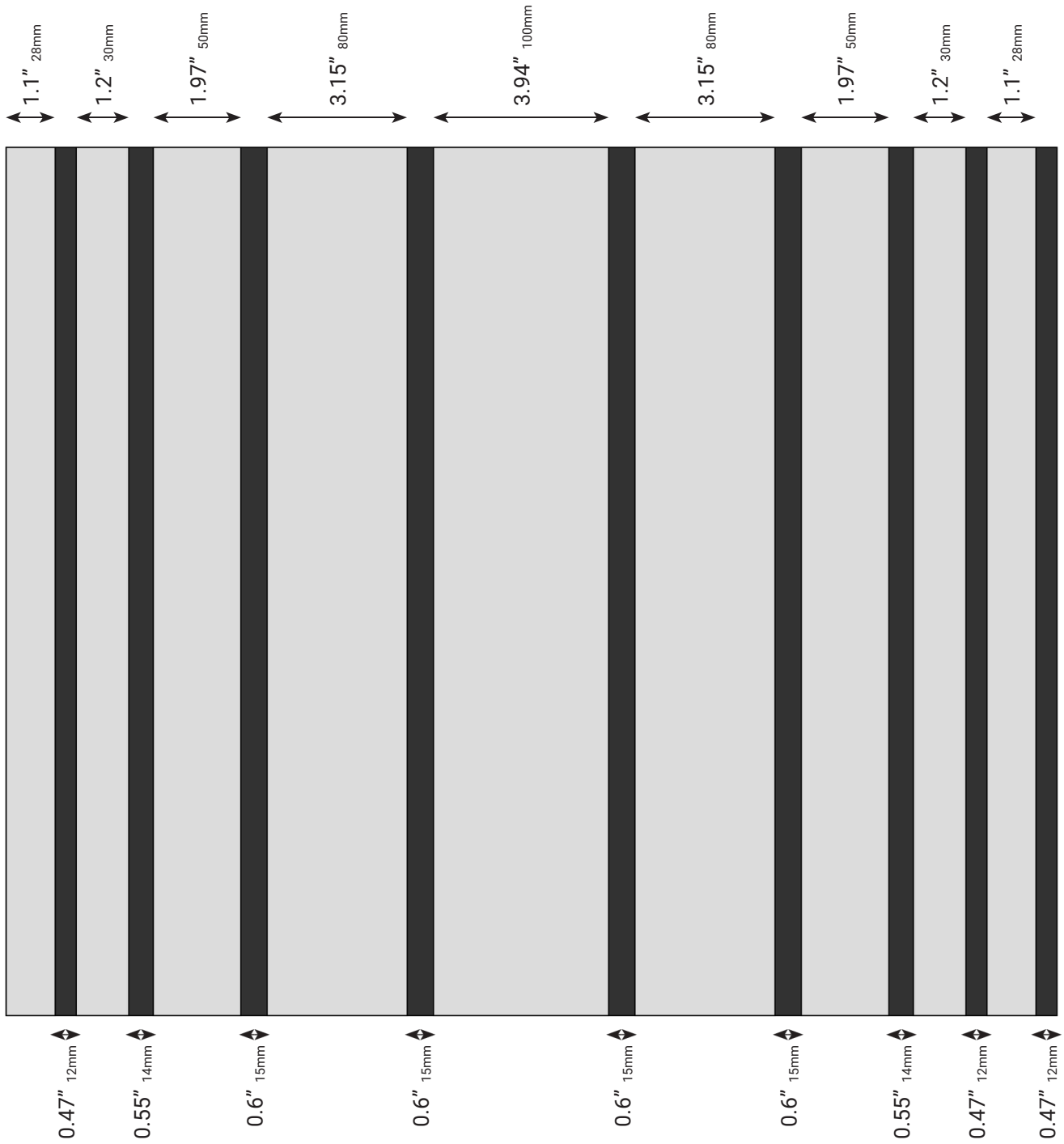
0.49" 12.32mm

Panel Front

Panel Side



## Pattern Detail



# Acoustic Leather Tiles



---

## CONTENT

Backing	100% PET (60% recycled PET)
Face	100% Leather

## DIMENSIONS

Tile	23.6"(L) x 23.6"(W) x 0.49"(D) (600mm x 600mm x 12.3mm)
Panel	59"(L) x 23.6"(W) x 0.49"(D) (1500mm x 600mm x 12.3mm)

## WEIGHT

Tile Strisce	37 - 38 oz per tile (1045 - 1077gr per tile)
Panel	88oz per panel (2494gr per panel)

## FLAMMABILITY

ASTM E84	Class B
----------	---------

## ACOUSTIC

Direct Fix	0.55 (refer to graph on following page)
2" Airgap	0.75 (refer to graph on following page)
Ceiling	0.70 (refer to graph on following page)

## APPLICATION

Wall, Ceiling

## DESCRIPTION

The Acoustic Leather Tiles combines acoustic performance with Italian leather craftsmanship. Finished in Pavoni's distinguished leathers, recognized for their use in prestigious brands, each design offers a surface that is both tactile and timeless.

## ADDITIONAL INFORMATION:

The Acoustic Leather Tiles is produced using a wide-range of leather finishes in several unique patterns, applied to a black, semi-rigid PET felt panel.

The leather is precision-cut and arranged with intentional spacing, allowing the felt to emerge between each shape. The result is a harmonious interplay of materials, textures, and contrasts, delivering exceptional sound absorption.

The Acoustic tiles collection are suitable for both wall and ceiling installations, fitting standard drop-ceiling grids.

Each of the designs in the Tiles Collection align on all four sides, perfect for large-scale or small-scale installations.

Custom patterns can be produced.

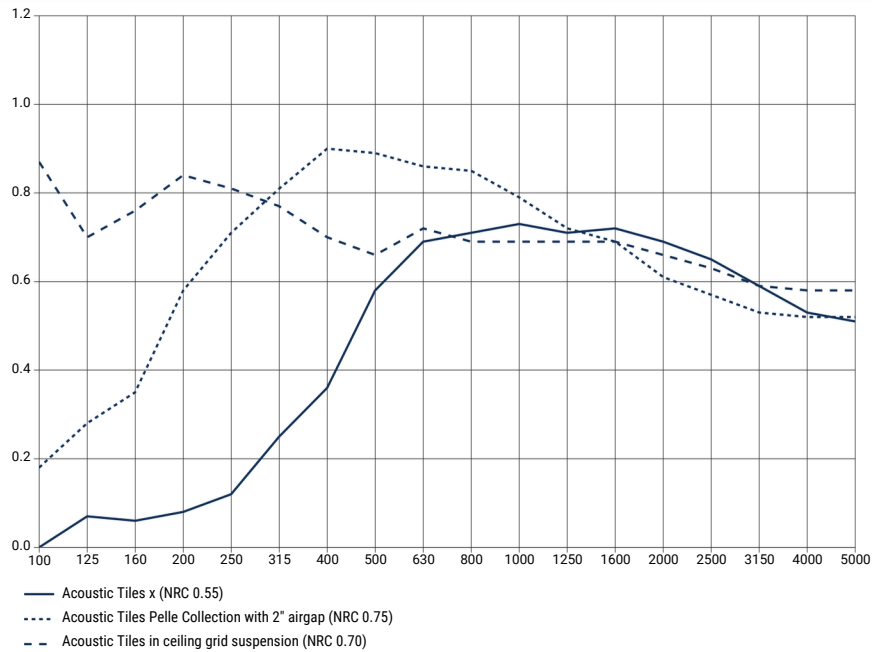
Please contact customer service for more details.

Because leather is a natural material, variations in grain and texture will occur from tile to tile or panel to panel. Once installed, these subtle differences in direction and character are considered an inherent part of the product's authentic appeal.

This natural variation enhances the richness and depth of the finished installation.

## ENVIRONMENT:

- Red List Compliant
- No FR Additives
- No Conflict Minerals
- Recycled Content
- No PFAS/PFOS Chemicals Present
- Health Product Declaration®
- Published with Ecomedes
- Published with mindful MATERIALS



$1/3$ Octave band frequency (Hz)	Absorption Coefficient Direct Fix	Absorption Coefficient 2" Airgap	Absorption Coefficient Ceiling Grid
100	0.00	0.18	0.87
125	0.07	0.28	0.70
160	0.06	0.35	0.76
200	0.08	0.58	0.84
250	0.12	0.71	0.81
315	0.25	0.81	0.77
400	0.36	0.90	0.70
500	0.58	0.89	0.66
630	0.69	0.86	0.72
800	0.71	0.85	0.69
1000	0.73	0.79	0.69
1250	0.71	0.72	0.69
1600	0.72	0.69	0.69
2000	0.69	0.61	0.66
2500	0.65	0.57	0.63
3150	0.59	0.53	0.59
4000	0.53	0.52	0.58
5000	0.51	0.52	0.58
NRC	0.55	0.75	0.70